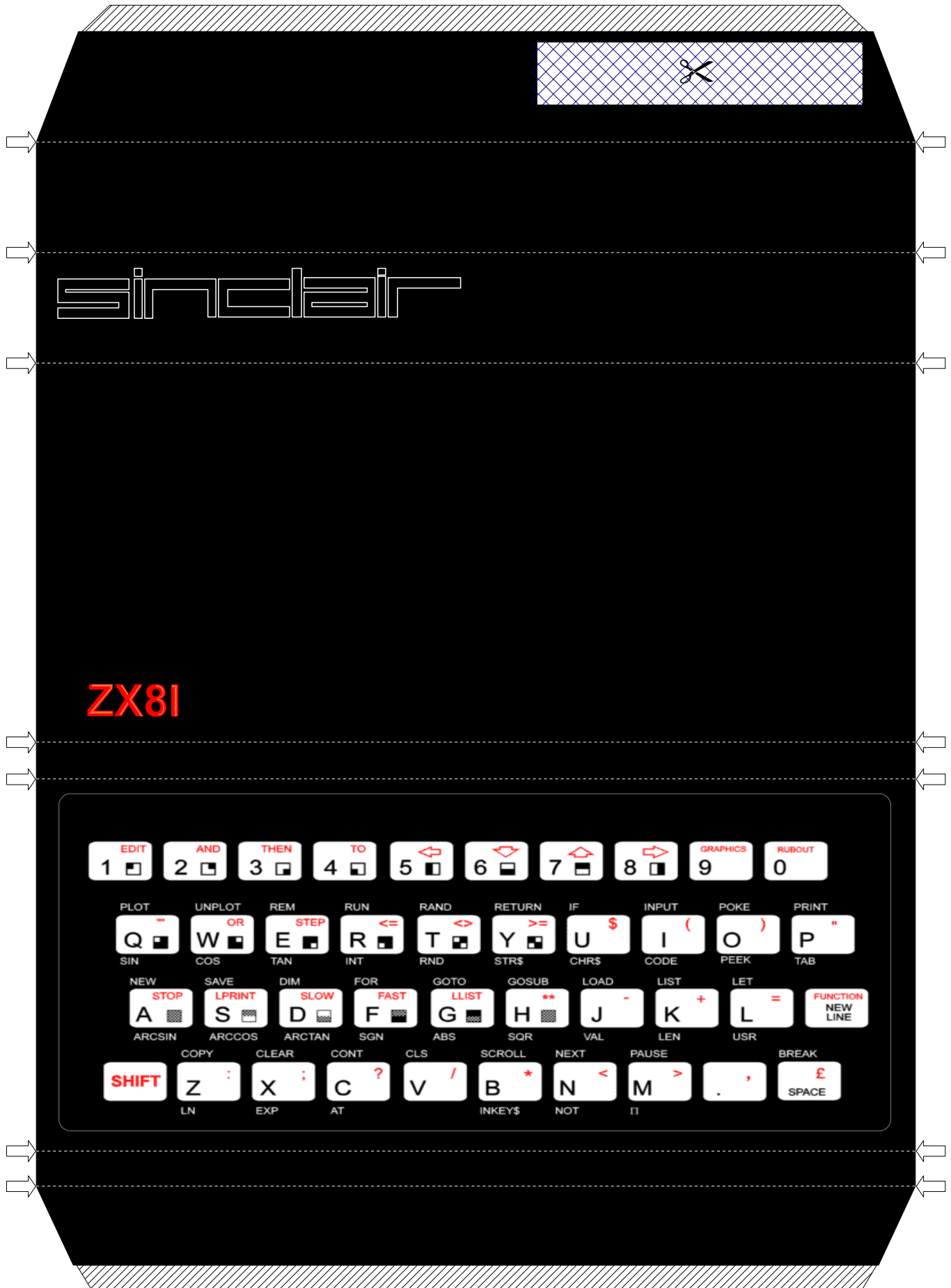
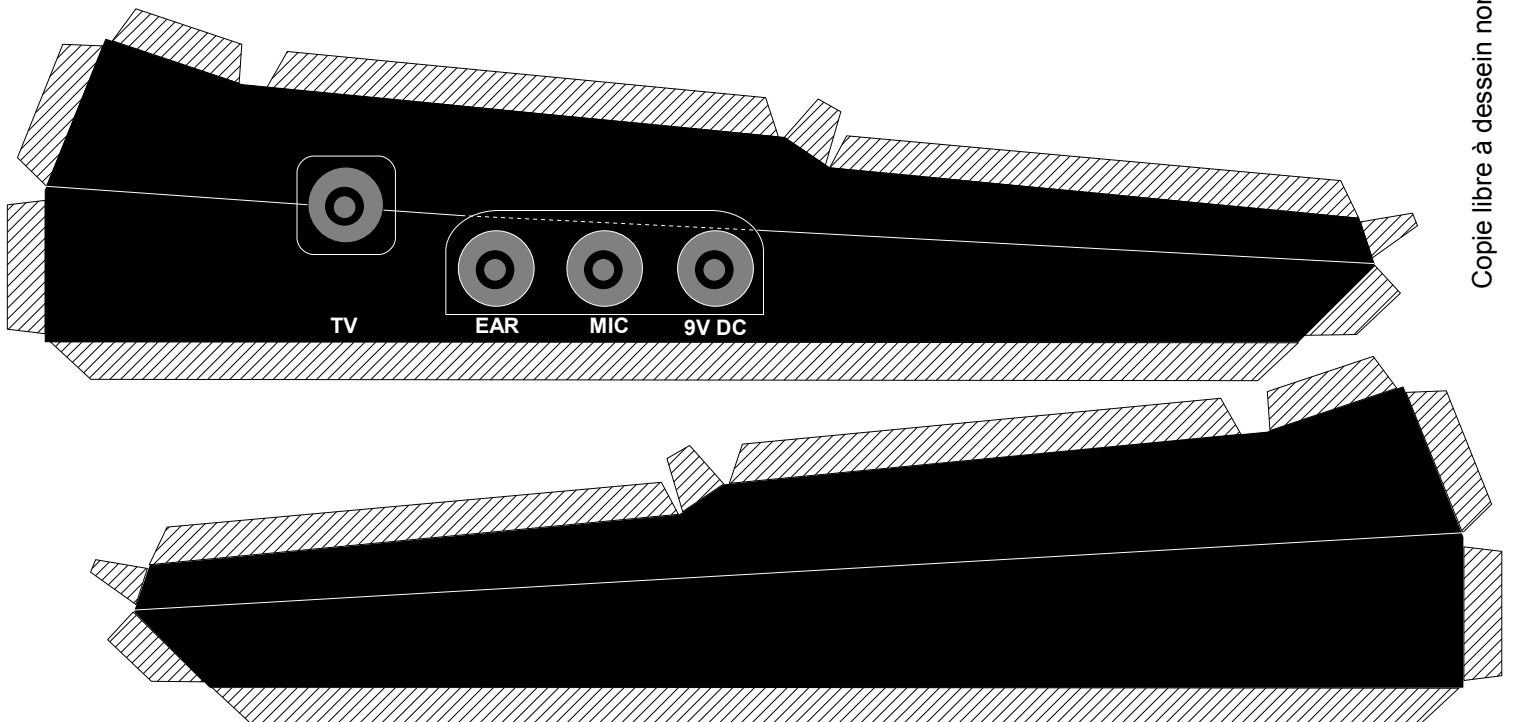
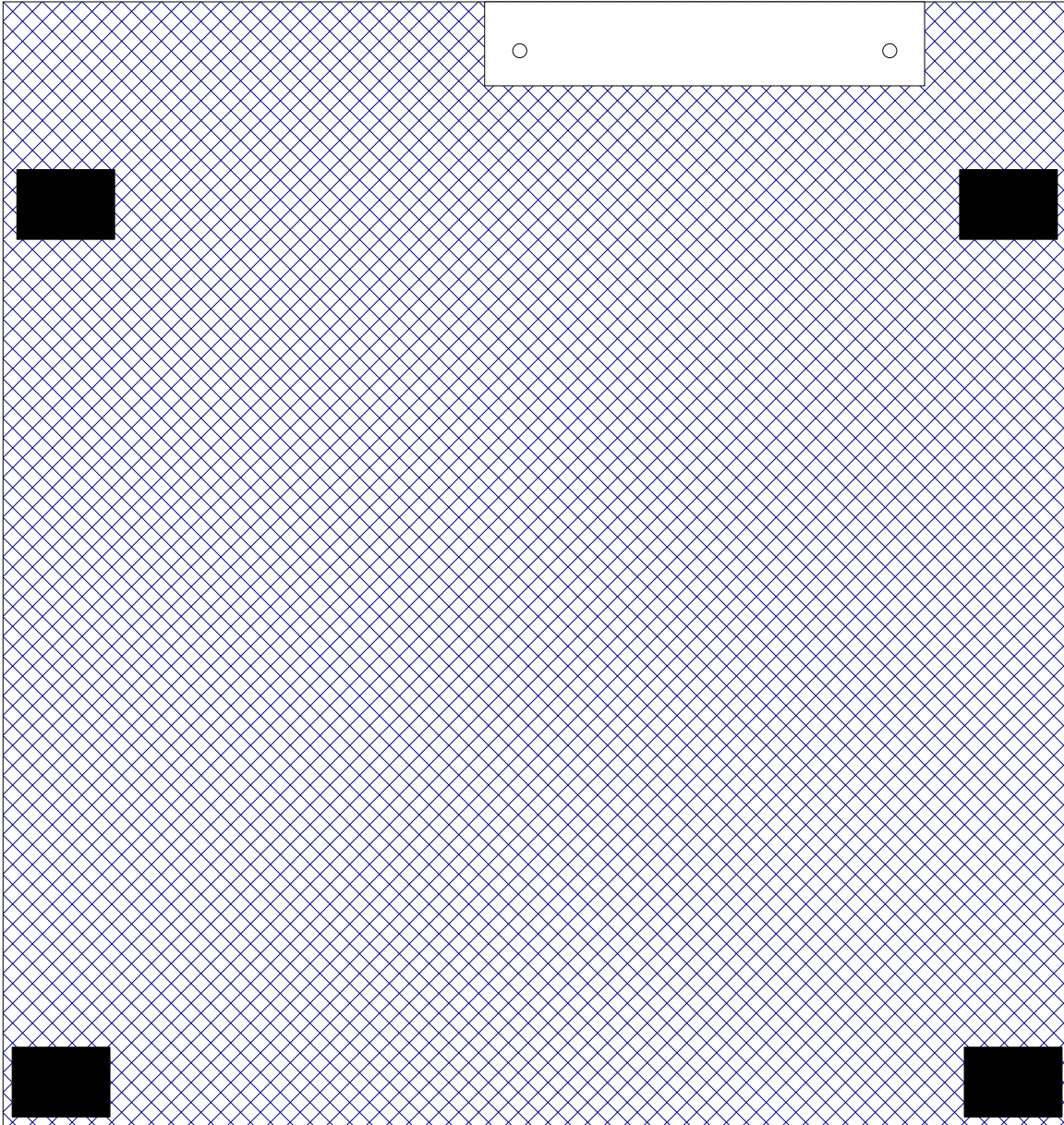
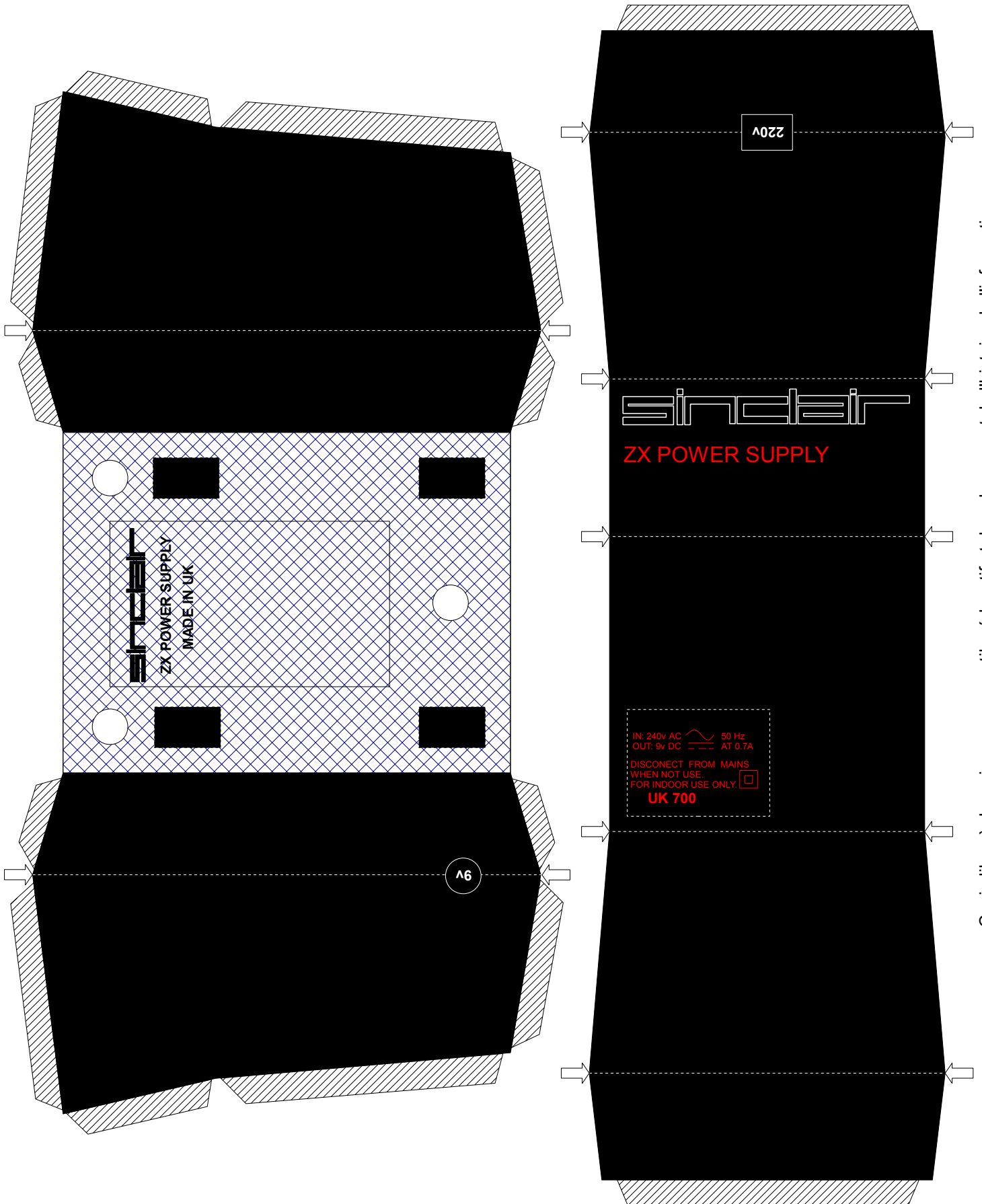


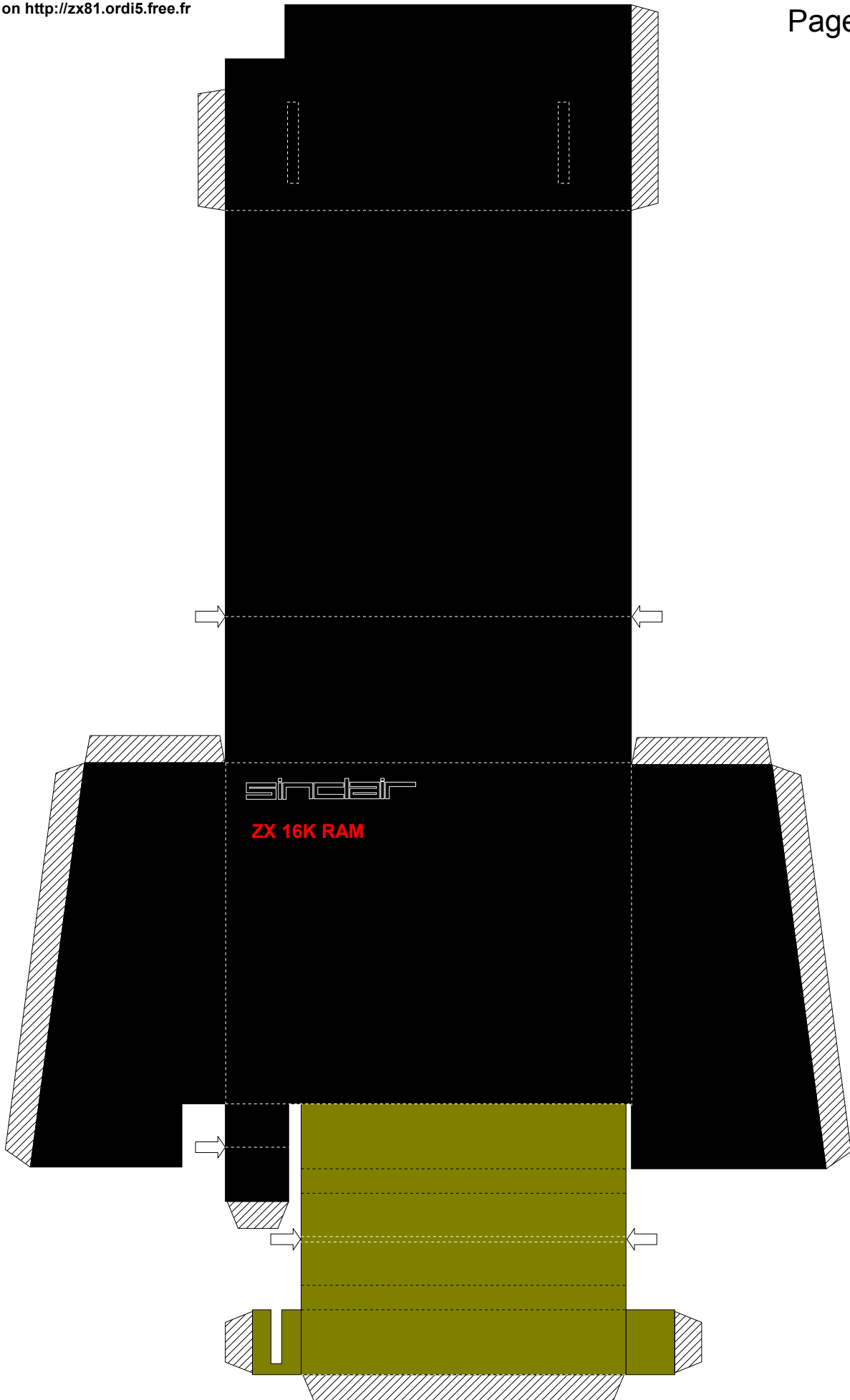
The Zx81 Paper Kit.

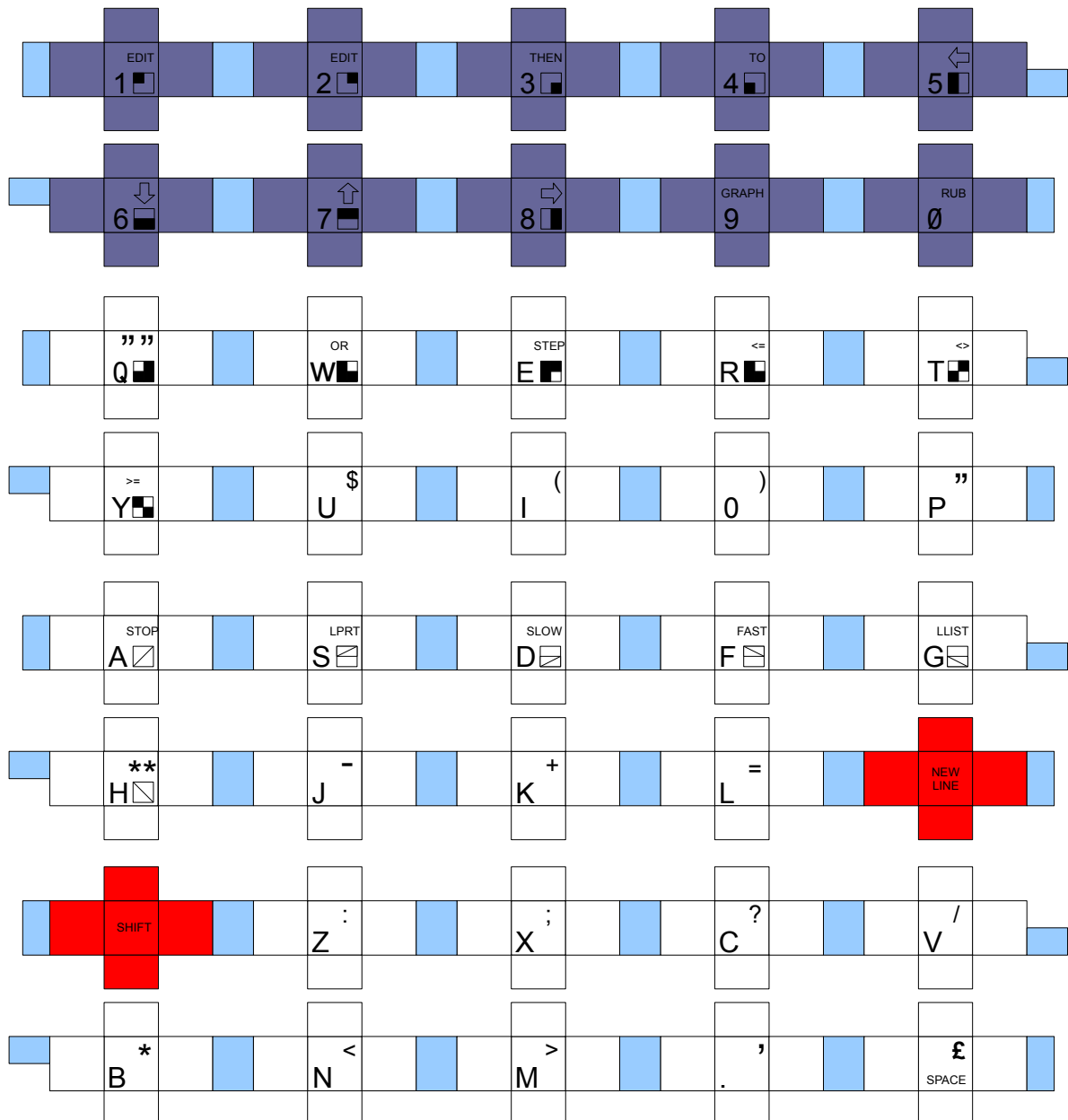
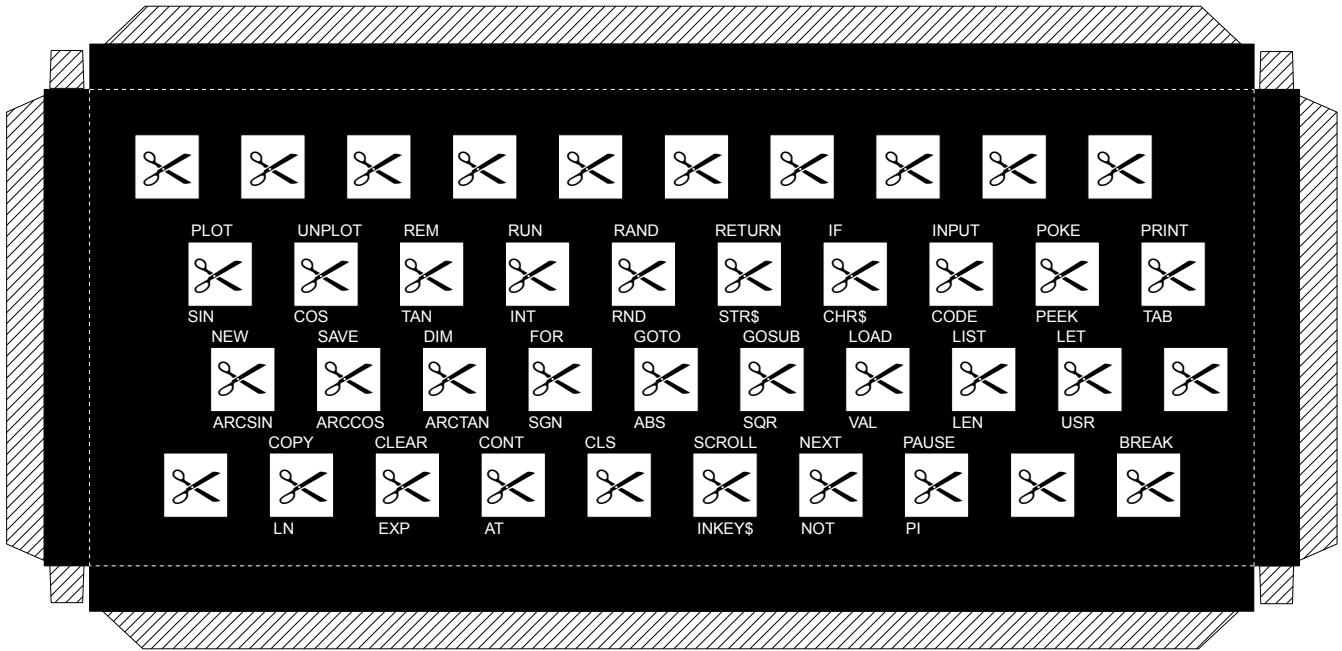
- 1) ZX81 CONSOLE.
PAGES 2 AND 3.
- 2) POWER SUPPLY.
PAGE 4.
- 3) SINCLAIR 16KB RAM PACK.
PAGE 5.
- 4) ABS KEYBOARD.
PAGES 6 AND 7.
- 5) MOTHERBOARD.
PAGE 8.
- 6) ZX PRINTER.
PAGES 9 AND 10.
- 7) KIT ASSEMBLY.
PAGES 11 AND 12.

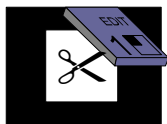
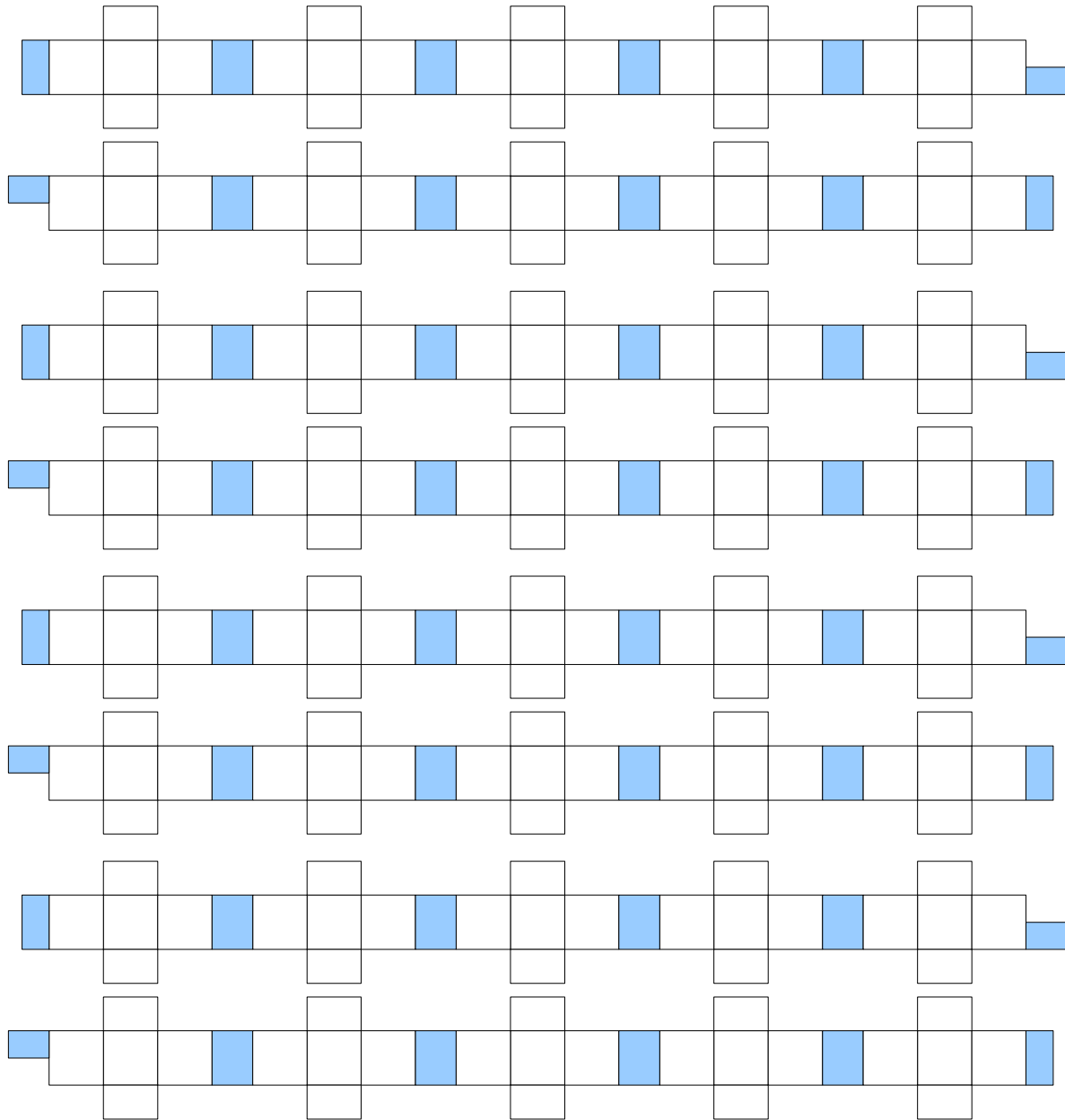





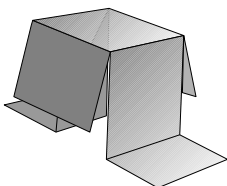




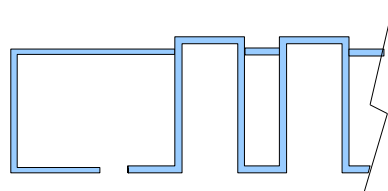


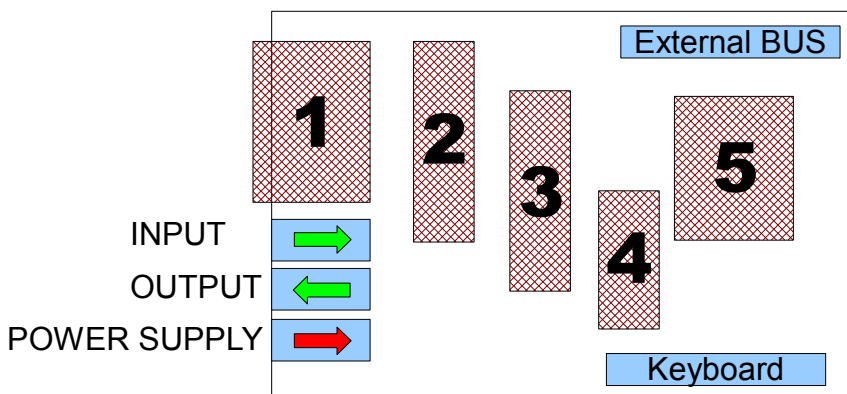
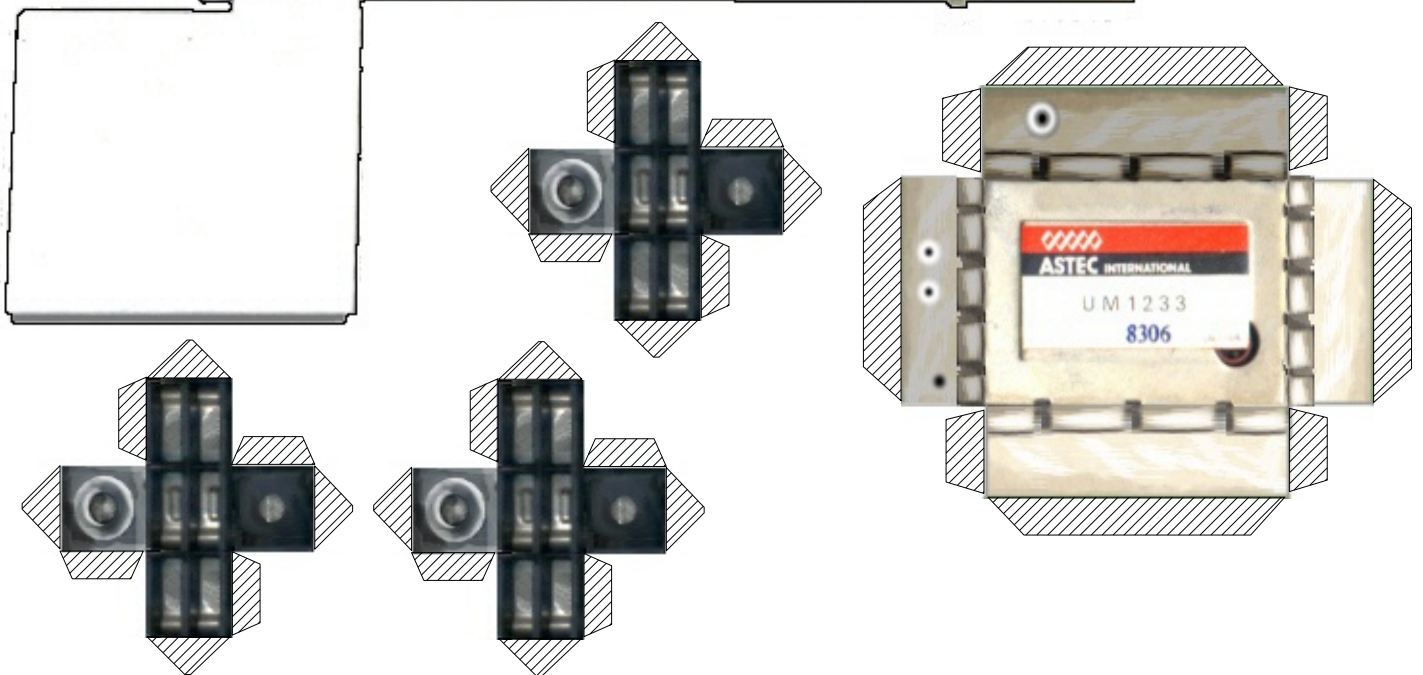
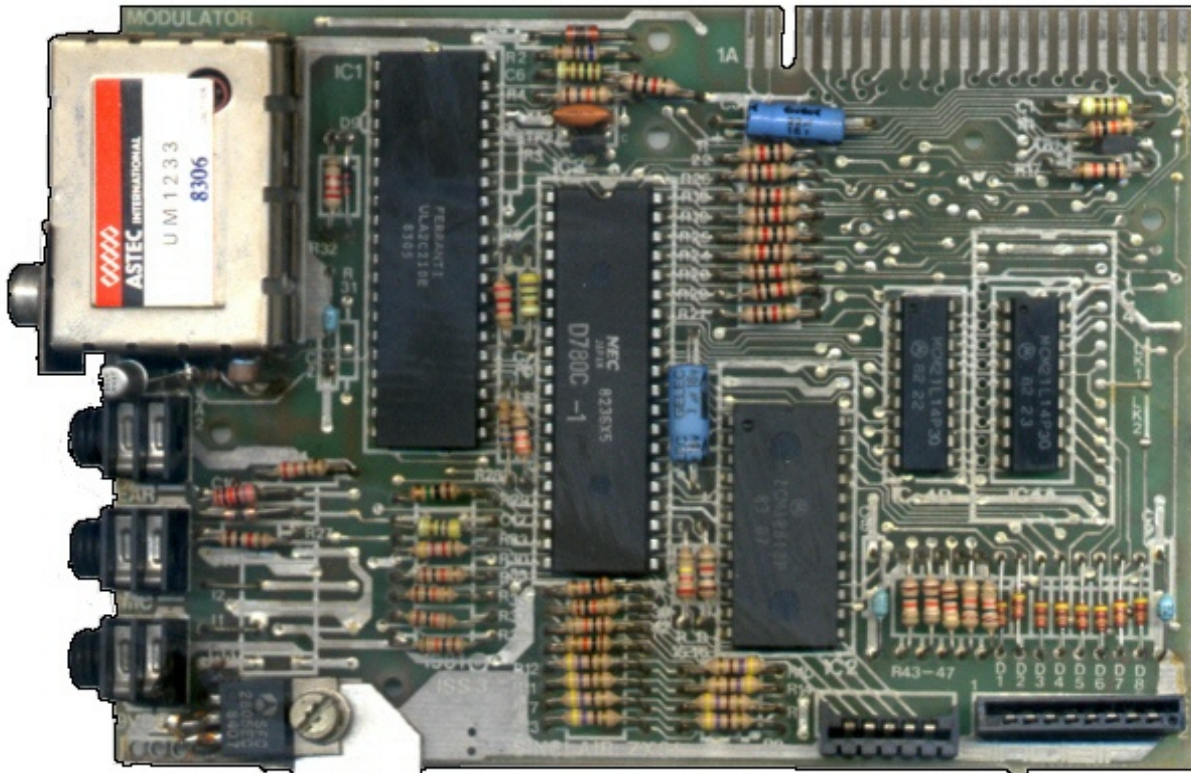


Case 1 (easy): Don't cut the  symbols, Cut all keys separatly and fixe them directly on the keyboard.



Case 2 (hard): Mechanical Keyboard.
(cut all strips and fixe them in the keyboard)

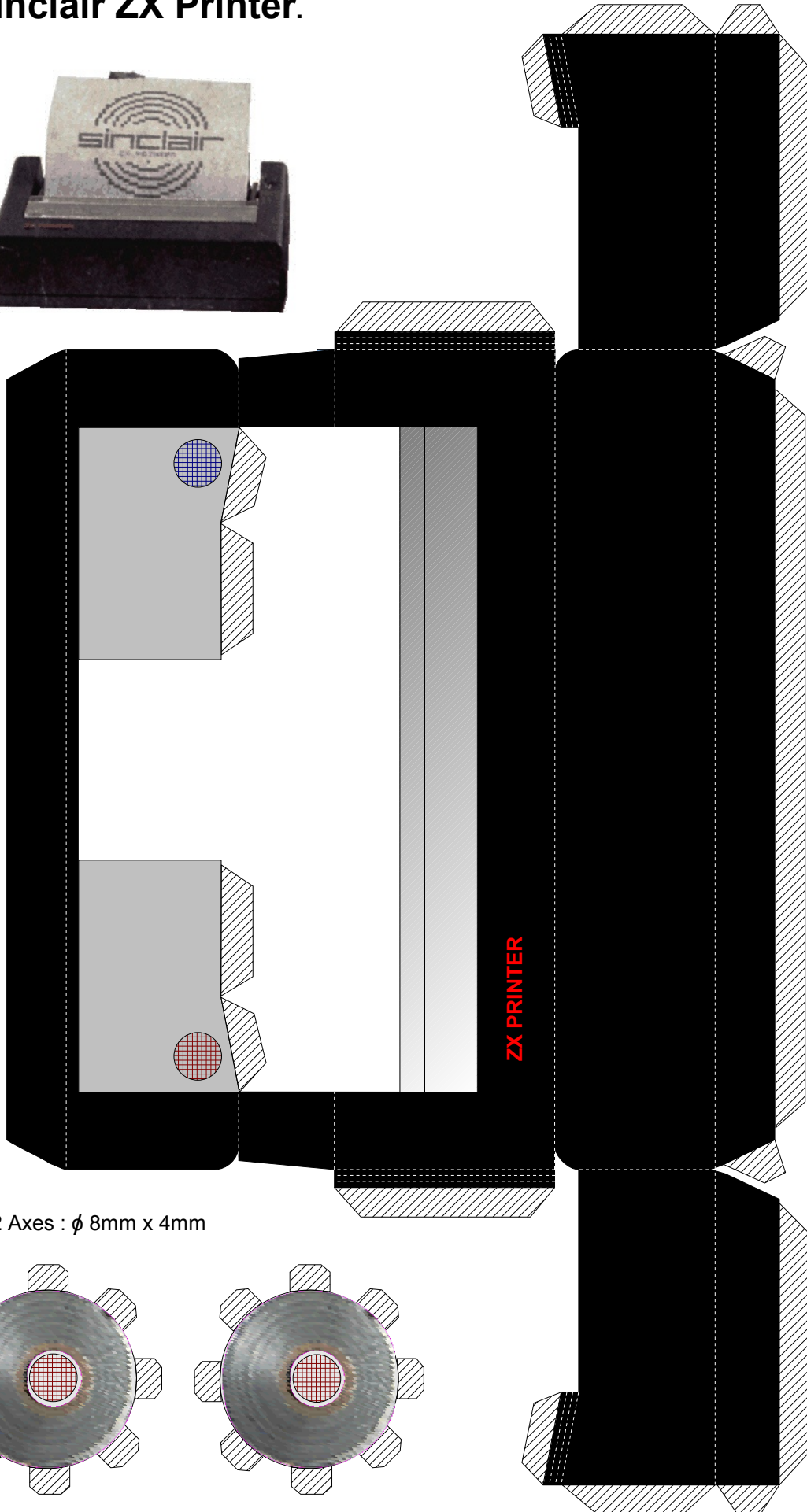


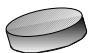


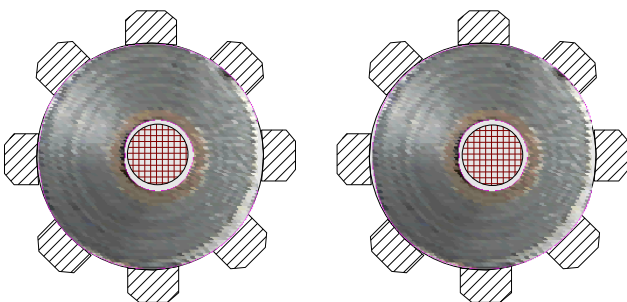
Z80 Motherboard.

- 1 : Video.
- 2 : ULA (Unit logical array)
- 3 : Z80
- 4 : ROM (BASIC INTERPRETER)
- 5 : RAM (2X512B ->ZX81; 1x2Kb->TS1000)

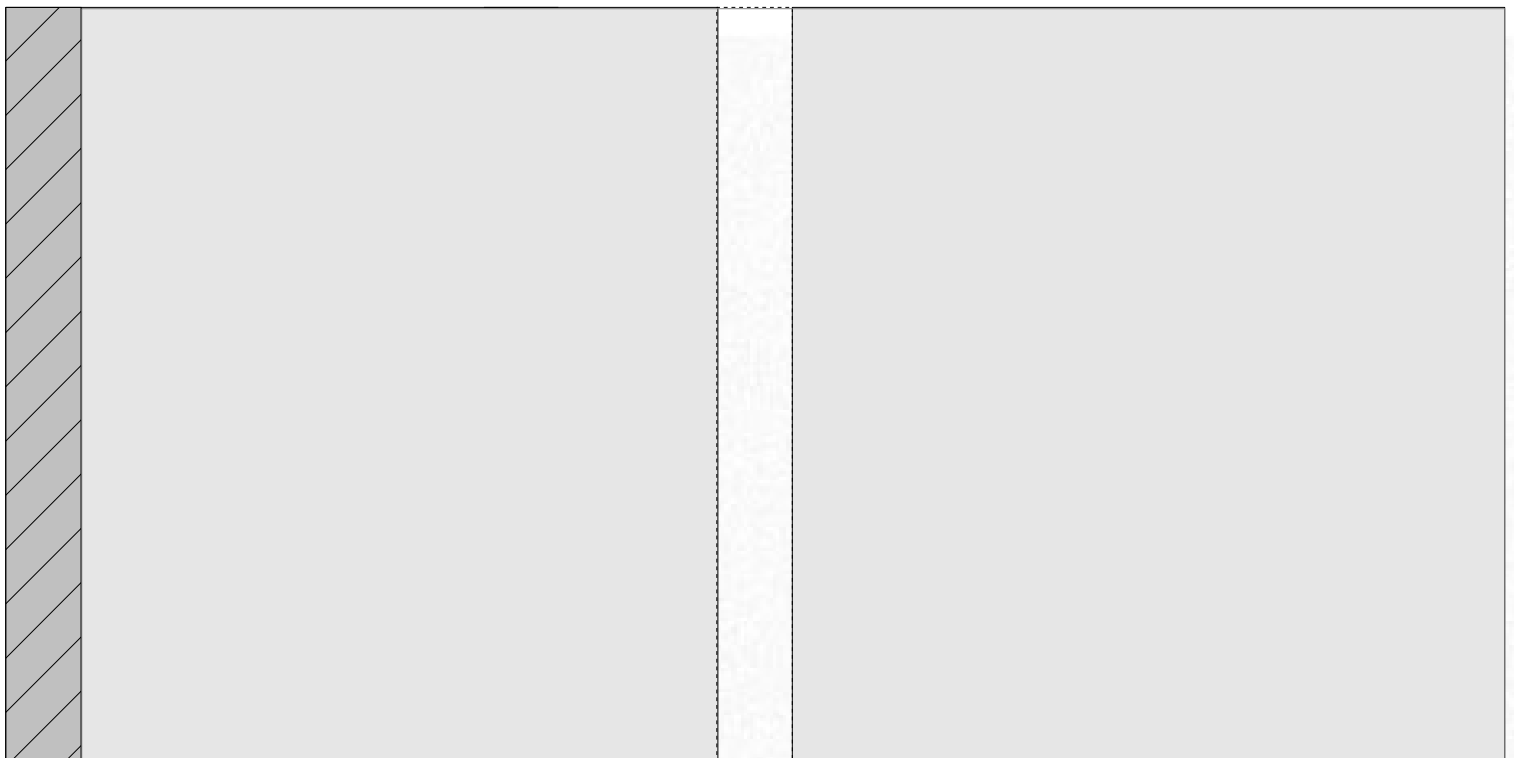
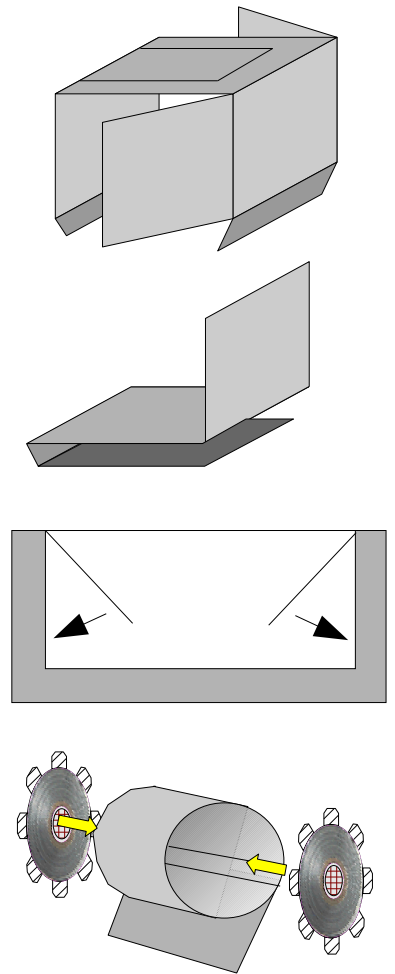
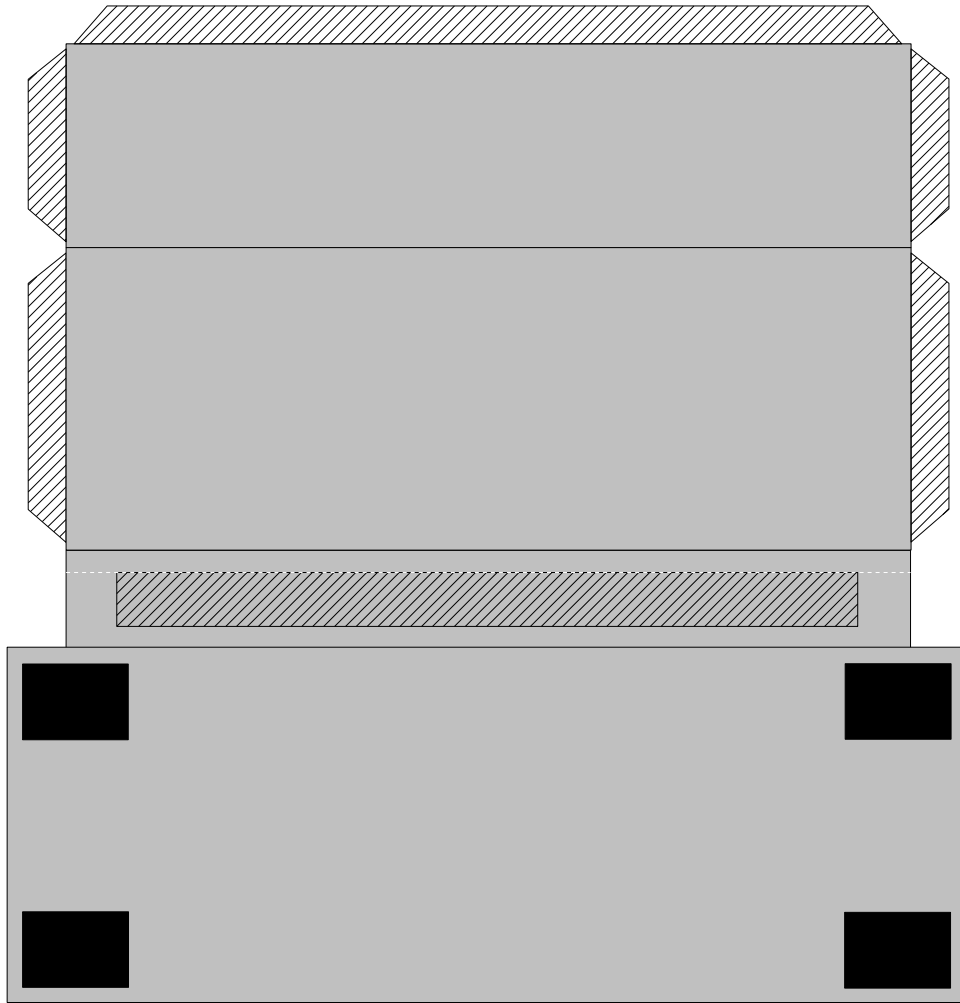
Sinclair ZX Printer.



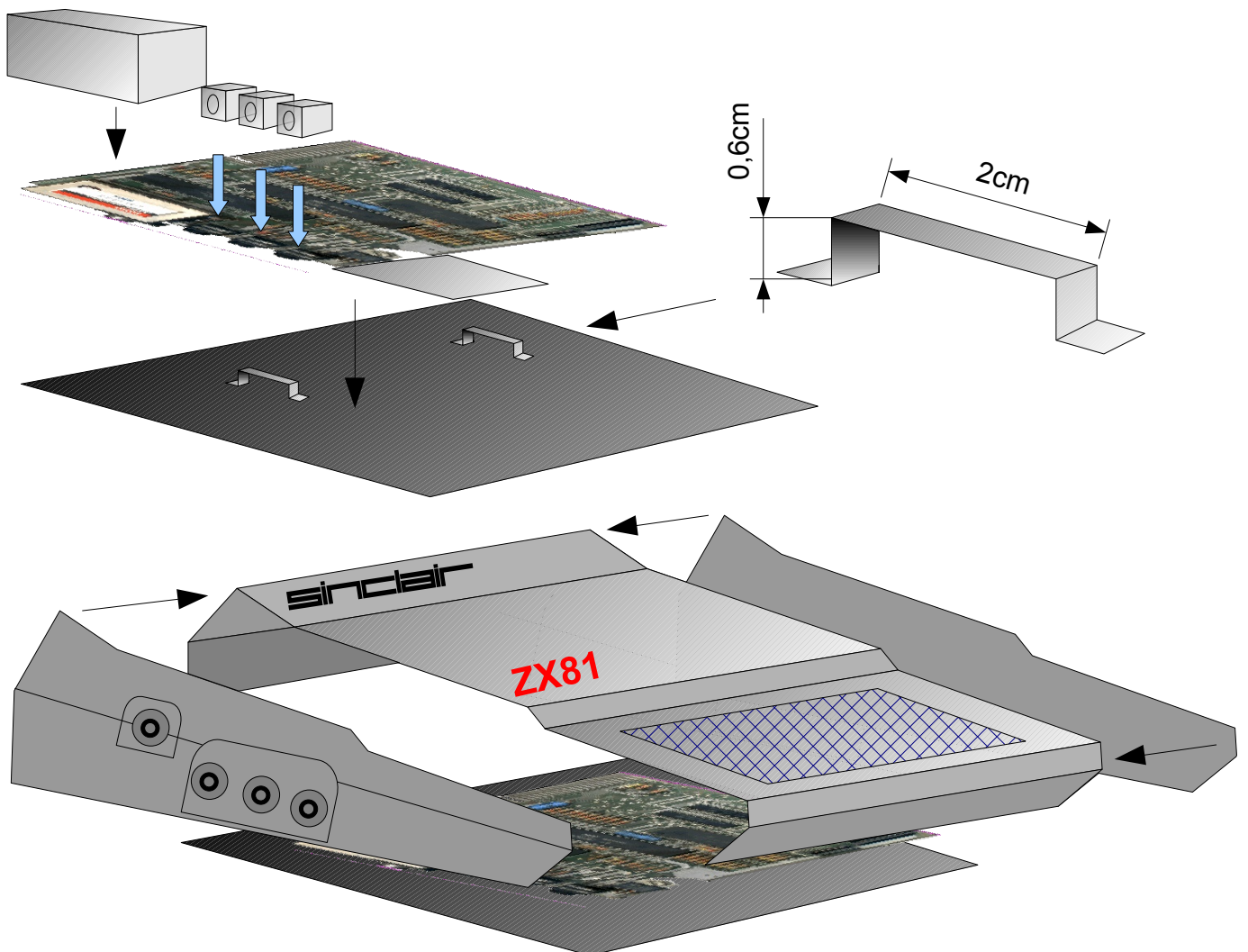
 2 Axes : ϕ 8mm x 4mm

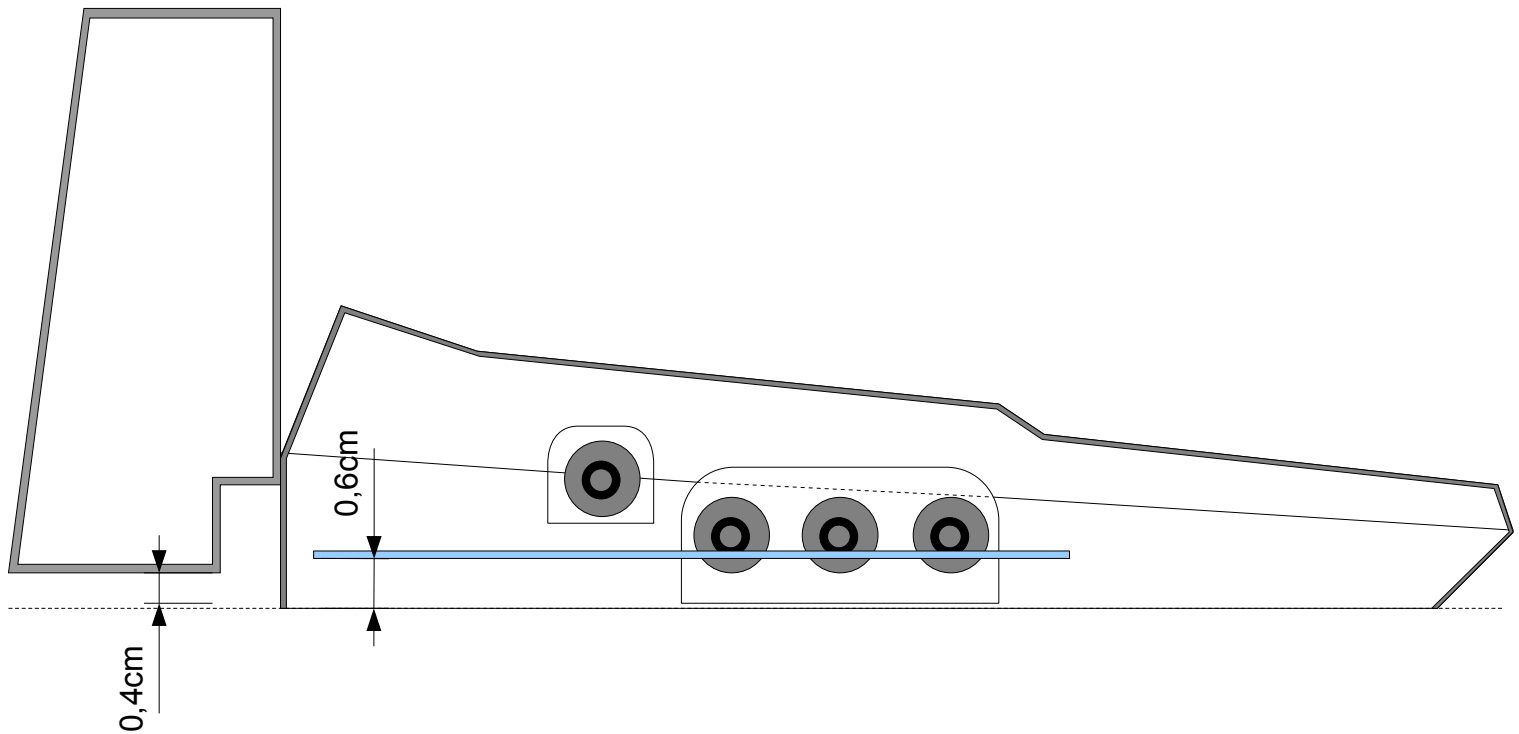


Sinclair ZX Printer.



Sinclair ZX81 console.





Sinclair 16Kb RAM PACK.

9volt DC Adaptator.

